



TOWNSLEY

CONSTRUCTION

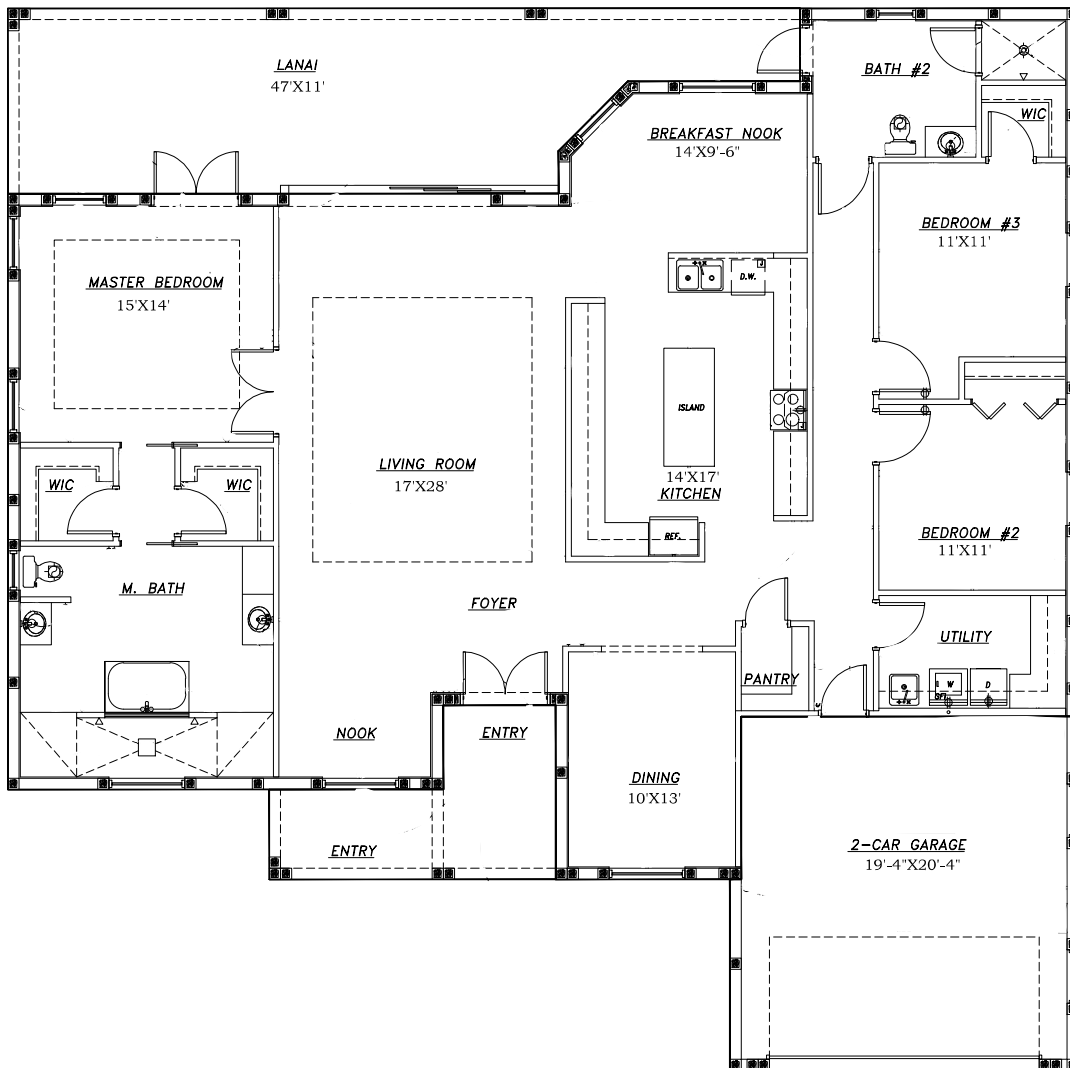


"The Briggs"

- 3 Bedrooms
- 2 Full Baths
- 2 Car Garage
- Optional Rooms

2,451 SF Living
3,413 SF Total

\$386,110
As Shown and
outlined on
Standard Quality
Features





TOWNSLEY

— CONSTRUCTION —

Standard Quality Features - The Briggs

Structural

- Concrete block construction with stucco exterior finish
- Hurricane clips & straps for strength
- 3,000 PSI w/ fiber mesh concrete monolithic slab and foundation with reinforcement.
- Engineered trusses & structural system

Interior

- 9' & 10' Ceilings throughout
- 2 Coats latex paint
- Tile in all rooms except bed & closets
- Stain Resistant Carpet
- Ventilated wire shelving
- Textured ceilings
- Orange peel walls
- Electrical fixture allowance - \$1,000

Exterior

- 2 Exterior hose bibs & 2 WP GFI outlets
- 30 year architectural shingles
- Septic & Water connection included
- Site Preparation Allowance - \$7,500
- 2 Coats latex paint
- Sod & Landscape allowance - \$2,200
- Permits & Impact fees included

Energy Saving Features

- High efficiency 14 Seer HVAC w/ 10 year functional parts warranty.
- R-38 attic insulation
- 200 amp electrical service
- 40 gallon water heater
- Vinyl windows with Insulated, low E (white)

Kitchen

- Appliance allowance - \$2,000
- Stainless sink with Moen single lever faucet (chrome)
- Garbage disposal
- All wood cabinets
- Level 1 Granite or Quartz Countertops
- Ice maker line

Bath features

- Tub with tile walls
- Tiled shower with glass enclosure
- Full length vanity mirrors
- All wood cabinets
- Moen single lever faucets (chrome)

**** pricing, features, terms of availability, and amenities are subject to change****