



# TOWNSLEY

CONSTRUCTION

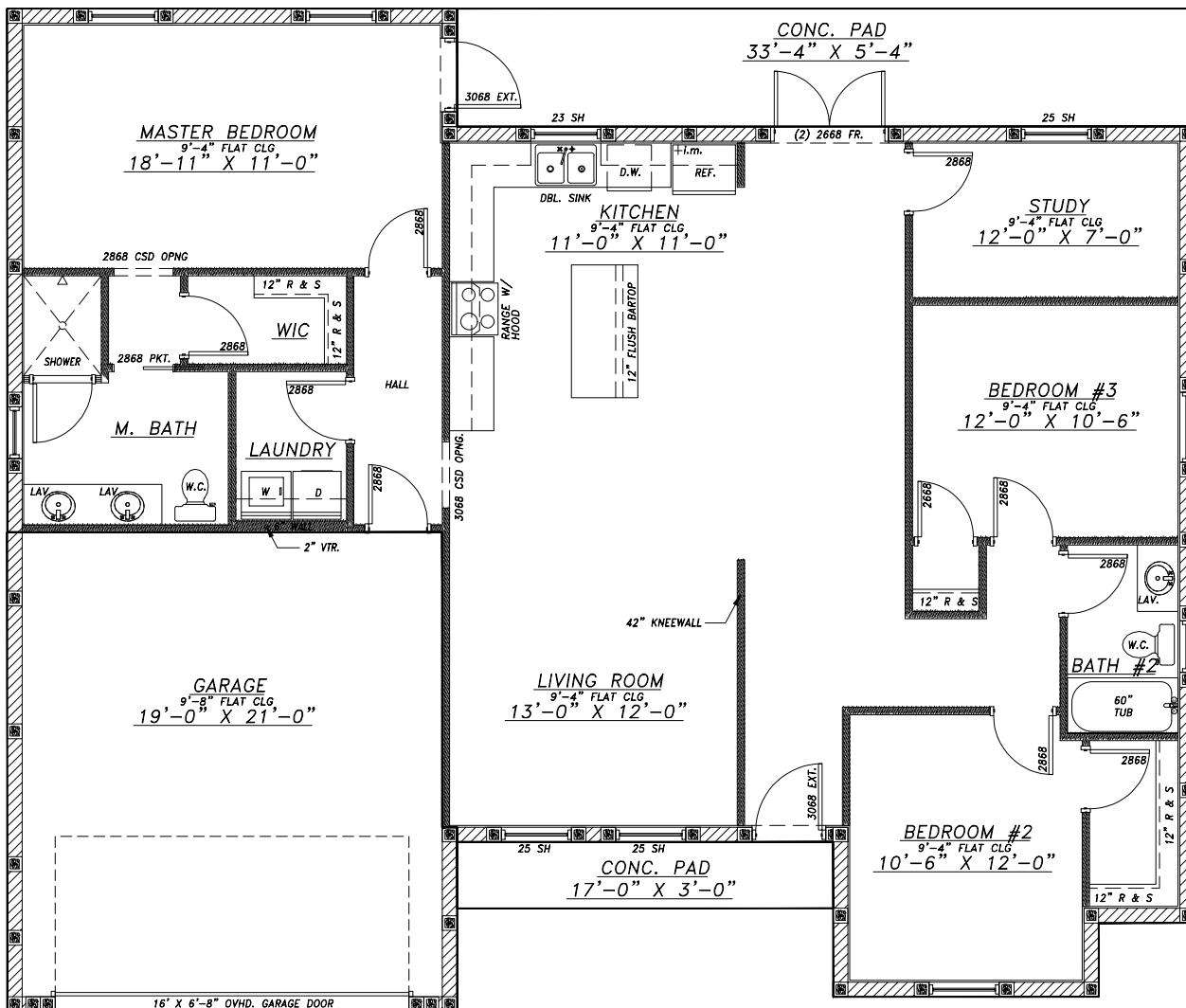


"The Chewing"

- 3 Bedrooms
- 2 Full Baths
- 2 Car Garage

1,668 SF Living  
2,100 SF Total

\$259,879  
As Shown and  
outlined on  
Standard Quality  
Features





# TOWNSLEY

— CONSTRUCTION —

## ***Standard Quality Features - The Chewing***

### **Structural**

- Concrete block construction with front siding and stucco exterior finish
- Hurricane clips & straps for strength
- 3,000 PSI w/ fiber mesh concrete monolithic slab and foundation with reinforcement.
- Engineered trusses & structural system

### **Interior**

- 9' ceilings throughout
- 2 Coats latex paint
- Tile in all rooms except beds/closets
- Stain Resistant Carpets in Beds/Closets
- Ventilated wire shelving
- Textured ceilings & Orange Peel Walls
- Electrical fixture allowance - \$1,000

### **Exterior**

- 2 Exterior hose bibs & 2 WP GFI outlets
- 30 Year architectural shingles
- Septic and water connection included
- Site preparation allowance - \$7,500
- 2 Coats latex paint
- Steel hurricane garage door
- Sod & Landscape allowance - \$2,200
- Permits & Impact fees included

### **Energy Saving Features**

- High efficiency 14 Seer HVAC w/ 10 year functional parts warranty.
- R-38 attic insulation
- 200 amp electrical service
- 40 gallon water heater
- Vinyl windows with Insulated, low E (white)

### **Kitchen**

- Appliance allowance - \$2,000
- Stainless sink with Moen single lever faucet (chrome)
- Garbage disposal
- All wood cabinets
- Granite or Quartz Level 1 counter tops
- Ice maker line

### **Bath features**

- Tub with tile walls
- Tiled shower with glass enclosure
- Full length vanity mirrors
- All wood cabinets
- Moen single lever faucets (chrome)

**\*\* pricing, features, terms of availability, and amenities are subject to change\*\***