



# "The Hamblin"

3 Bedroom / 2 Bath / 2 Car Garage / Flex Space

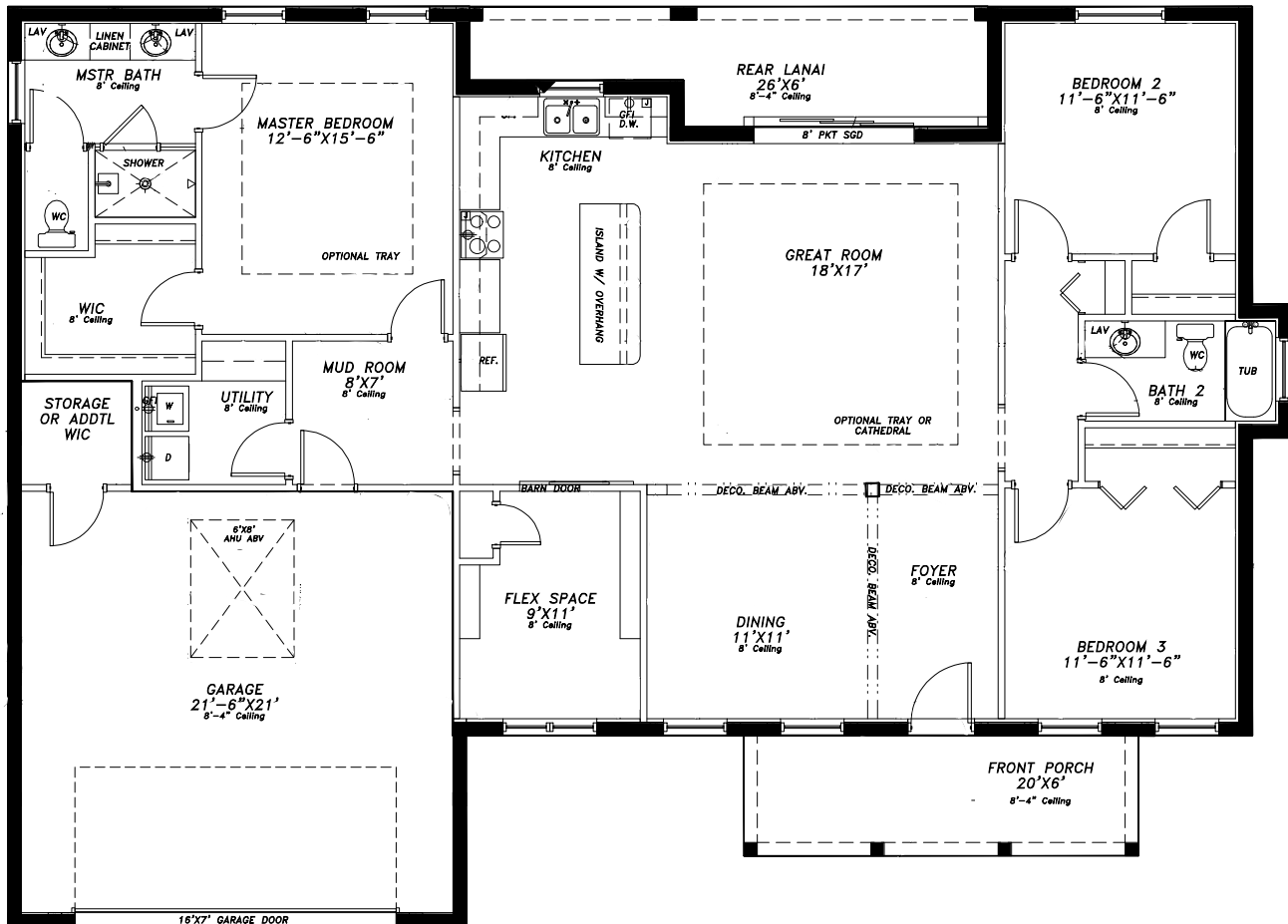
1,832 SF Living

2,601 SF Total

Base Price \$298,827

## TOWNSLEY

— CONSTRUCTION — As Outlined in Standard Quality Features on Back





# TOWNSLEY

CONSTRUCTION

## ***Standard Quality Features***

<https://sway.office.com/nkvPaVf5y9QB7UHU?ref=Link>



### **Structural**

- Concrete block construction with stucco & Stone exterior finish per plan
- Hurricane clips & straps for strength
- 3,000 PSI fiber mesh concrete monolithic slab and foundation with reinforcement.
- Engineered trusses and system

### **Interior**

- Ventilated wire shelving
- 3 Choices of Door types
- Tile in common areas stain resistant carpet in bedroom and closets
- Orange peel walls, knockdown ceilings and rounded corners in most areas

### **Exterior**

- 2 Exterior hose bibs & 2 WP GFI outlets
- 30 year architectural shingles
- Septic and water connection included
- Site Preparation Allowance - \$7,500
- Permits & Impact fees included

### **Energy Saving Features**

- High efficiency 15 Seer HVAC w/ 10 year functional parts warranty.
- R-38 attic insulation
- 200 amp electrical service
- 40 gallon water heater
- Vinyl windows with Insulated, low E (white)

### **Kitchen**

- Stainless sink with Moen single lever faucet (chrome)
- Garbage disposal
- All wood cabinets
- Granite or Quartz Level 1 counter tops
- Ice maker line

### **Bath features**

- Full length vanity mirrors
- All wood cabinets
- Moen single lever faucets (chrome)

**\*\* pricing, features, terms of availability, and amenities are subject to change\*\***



# "The Hamblin II"

3 Bedroom / 2 Bath / 2 Car Garage / Flex Space

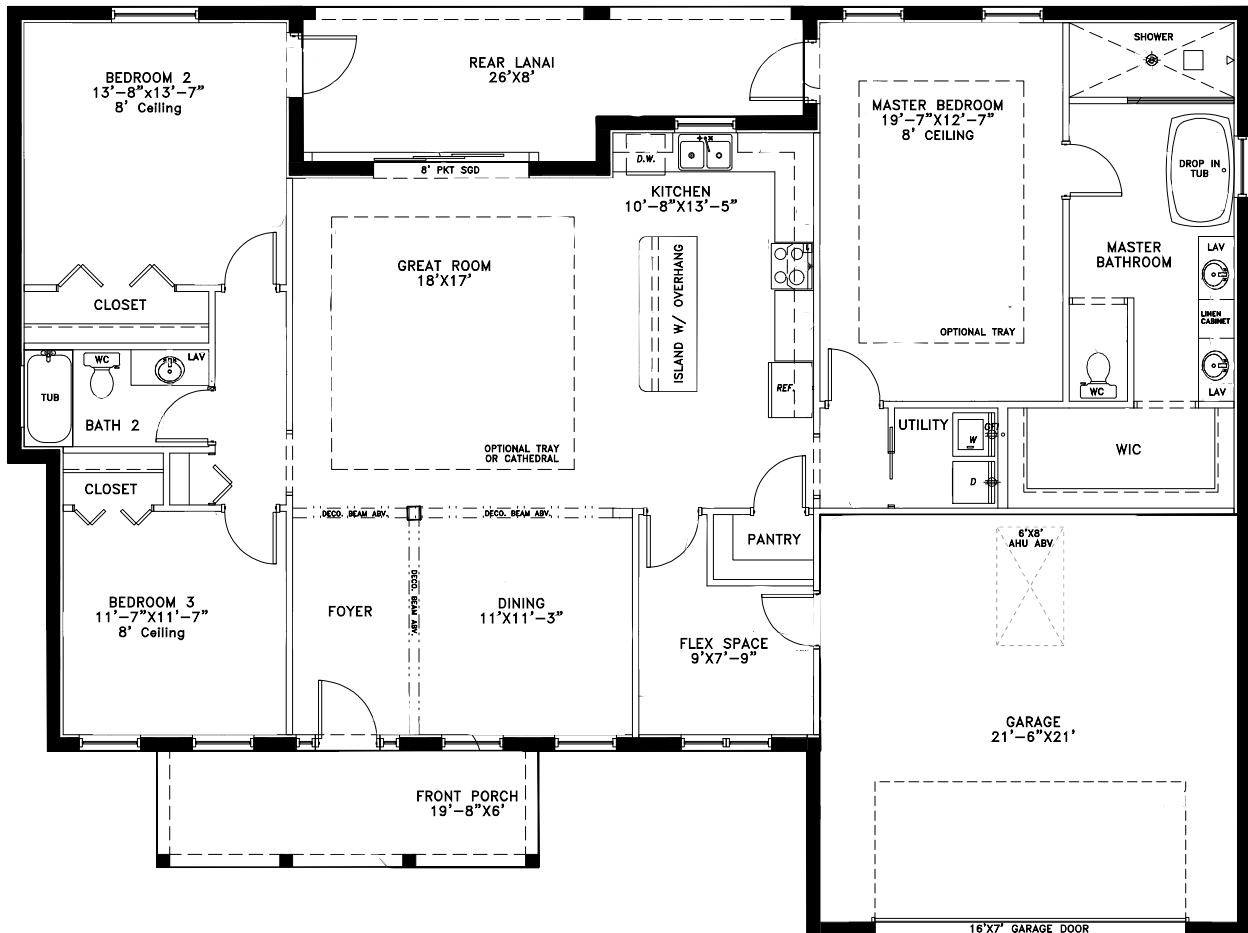
1,972 SF Living

2,759 SF Total

Base Price \$325,877.00

## TOWNSLEY

— CONSTRUCTION — As Outlined in Standard Quality Features on Back





# TOWNSLEY

CONSTRUCTION

## ***Standard Quality Features***

<https://sway.office.com/nkvPaVf5y9QB7UHU?ref=Link>



### **Structural**

- Concrete block construction with stucco & Stone exterior finish per plan
- Hurricane clips & straps for strength
- 3,000 PSI fiber mesh concrete monolithic slab and foundation with reinforcement.
- Engineered trusses and system

### **Interior**

- Ventilated wire shelving
- 3 Choices of Door types
- Tile in common areas stain resistant carpet in bedroom and closets
- Orange peel walls, knockdown ceilings and rounded corners in most areas

### **Exterior**

- 2 Exterior hose bibs & 2 WP GFI outlets
- 30 year architectural shingles
- Septic and water connection included
- Site Preparation Allowance - \$7,500
- Permits & Impact fees included

### **Energy Saving Features**

- High efficiency 15 Seer HVAC w/ 10 year functional parts warranty.
- R-38 attic insulation
- 200 amp electrical service
- 40 gallon water heater
- Vinyl windows with Insulated, low E (white)

### **Kitchen**

- Stainless sink with Moen single lever faucet (chrome)
- Garbage disposal
- All wood cabinets
- Granite or Quartz Level 1 counter tops
- Ice maker line

### **Bath features**

- Full length vanity mirrors
- All wood cabinets
- Moen single lever faucets (chrome)

**\*\* pricing, features, terms of availability, and amenities are subject to change\*\***





# TOWNSLEY

CONSTRUCTION

## ***Standard Quality Features***

<https://sway.office.com/nkvPaVf5y9QB7UHU?ref=Link>



### **Structural**

- Concrete block construction with stucco & Stone exterior finish per plan
- Hurricane clips & straps for strength
- 3,000 PSI fiber mesh concrete monolithic slab and foundation with reinforcement.
- Engineered trusses and system

### **Interior**

- Ventilated wire shelving
- 3 Choices of Door types
- Tile in common areas stain resistant carpet in bedroom and closets
- Orange peel walls, knockdown ceilings and rounded corners in most areas

### **Exterior**

- 2 Exterior hose bibs & 2 WP GFI outlets
- 30 year architectural shingles
- Septic and water connection included
- Site Preparation Allowance - \$7,500
- Permits & Impact fees included

### **Energy Saving Features**

- High efficiency 15 Seer HVAC w/ 10 year functional parts warranty.
- R-38 attic insulation
- 200 amp electrical service
- 40 gallon water heater
- Vinyl windows with Insulated, low E (white)

### **Kitchen**

- Stainless sink with Moen single lever faucet (chrome)
- Garbage disposal
- All wood cabinets
- Granite or Quartz Level 1 counter tops
- Ice maker line

### **Bath features**

- Full length vanity mirrors
- All wood cabinets
- Moen single lever faucets (chrome)

**\*\* pricing, features, terms of availability, and amenities are subject to change\*\***