

”The Harper”

3 Bedroom / 2 Bath
 / 2 Car Garage
 1,805 SF Living
 2,646 SF Total
 Base Price \$298,999
 As Outlined in
 Standard Quality
 Features on Back



TOWNSLEY
 — CONSTRUCTION —



TOWNSLEY

CONSTRUCTION

Standard Quality Features

<https://sway.office.com/nkvPaVf5y9QB7UHU?ref=Link>



Structural

- Concrete block construction with stucco & Stone exterior finish per plan
- Hurricane clips & straps for strength
- 3,000 PSI fiber mesh concrete monolithic slab and foundation with reinforcement.
- Engineered trusses and system

Interior

- Ventilated wire shelving
- 3 Choices of Door types
- Tile in common areas stain resistant carpet in bedroom and closets
- Orange peel walls, knockdown ceilings and rounded corners in most areas

Exterior

- 2 Exterior hose bibs & 2 WP GFI outlets
- 30 year architectural shingles
- Septic and water connection included
- Site Preparation Allowance - \$7,500
- Permits & Impact fees included

Energy Saving Features

- High efficiency 15 Seer HVAC w/ 10 year functional parts warranty.
- R-38 attic insulation
- 200 amp electrical service
- 40 gallon water heater
- Vinyl windows with Insulated, low E (white)

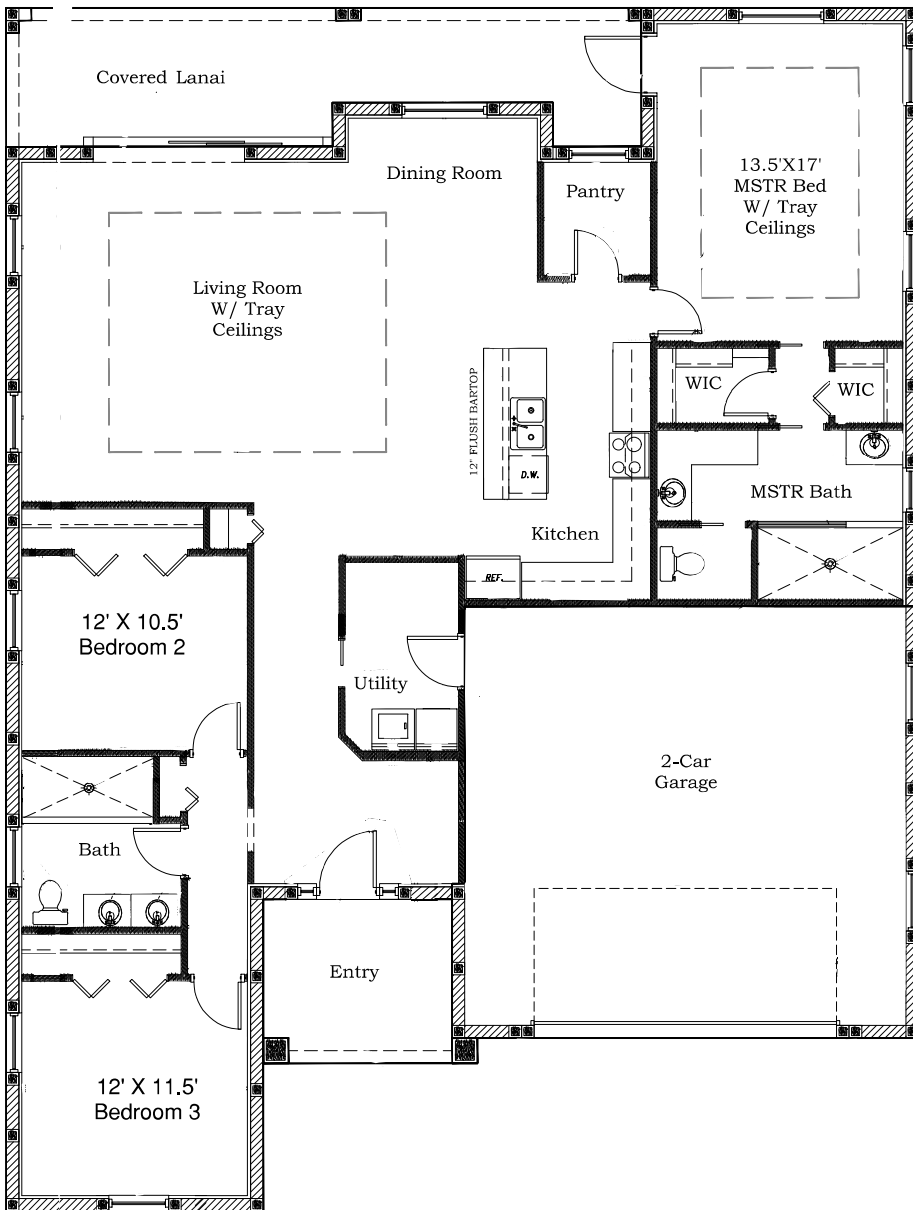
Kitchen

- Stainless sink with Moen single lever faucet (chrome)
- Garbage disposal
- All wood cabinets
- Granite or Quartz Level 1 counter tops
- Ice maker line

Bath features

- Full length vanity mirrors
- All wood cabinets
- Moen single lever faucets (chrome)

**** pricing, features, terms of availability, and amenities are subject to change****



"The Harper II"

3 Bedroom / 2 Bath / 2
 Car Garage
 1,924 SF Living
 2,774 SF Total
 Base Price \$317,550
 As Outlined in Standard
 Quality Features on Back



TOWNSLEY
 CONSTRUCTION



TOWNSLEY

CONSTRUCTION

Standard Quality Features

<https://sway.office.com/nkvPaVf5y9QB7UHU?ref=Link>



Structural

- Concrete block construction with stucco & Stone exterior finish per plan
- Hurricane clips & straps for strength
- 3,000 PSI fiber mesh concrete monolithic slab and foundation with reinforcement.
- Engineered trusses and system

Interior

- Ventilated wire shelving
- 3 Choices of Door types
- Tile in common areas stain resistant carpet in bedroom and closets
- Orange peel walls, knockdown ceilings and rounded corners in most areas

Exterior

- 2 Exterior hose bibs & 2 WP GFI outlets
- 30 year architectural shingles
- Septic and water connection included
- Site Preparation Allowance - \$7,500
- Permits & Impact fees included

Energy Saving Features

- High efficiency 15 Seer HVAC w/ 10 year functional parts warranty.
- R-38 attic insulation
- 200 amp electrical service
- 40 gallon water heater
- Vinyl windows with Insulated, low E (white)

Kitchen

- Stainless sink with Moen single lever faucet (chrome)
- Garbage disposal
- All wood cabinets
- Granite or Quartz Level 1 counter tops
- Ice maker line

Bath features

- Full length vanity mirrors
- All wood cabinets
- Moen single lever faucets (chrome)

**** pricing, features, terms of availability, and amenities are subject to change****