



TOWNSLEY

CONSTRUCTION

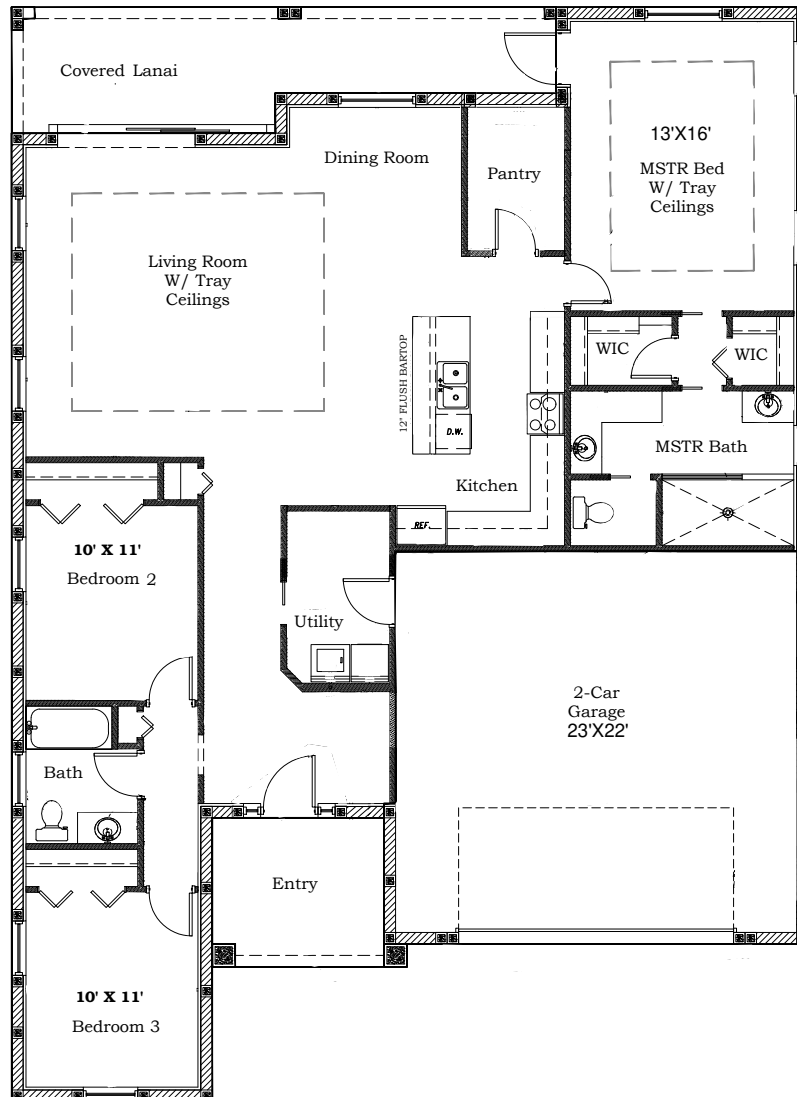


"The Harper"

**3 Bedrooms
2 Full Baths
2 Car Garage**

**1,805 SF Living
2,646 SF Total**

**\$288,879
As Shown and
outlined on
Standard Quality
Features**





TOWNSLEY

CONSTRUCTION

Standard Quality Features - The Harper

Structural

- Concrete block construction with stucco/cementitious exterior finish
- Hurricane clips & straps for strength
- 3,000 PSI w/ fiber mesh concrete monolithic slab and foundation with reinforcement.
- Engineered trusses & structural system

Interior

- 9' & 10' ceilings throughout
- 2 Coats latex paint
- Tile in all rooms except bed & closets
- Stain Resistant Carpet
- Ventilated wire shelving
- Textured ceilings
- Orange peel walls
- Electrical fixture allowance - \$1,000

Exterior

- 2 Exterior hose bibs & 2 WP GFI outlets
- 30 Year architectural shingles
- Septic & Water connection included
- Site preparation allowance - \$7,500
- 2 Coats latex paint
- Steel hurricane garage door
- Sod & Landscape allowance - \$2,200
- Permits & Impact fees included

Energy Saving Features

- High efficiency 14 Seer HVAC w/ 10 Year functional parts warranty.
- R-38 attic insulation
- 200 Amp electrical service
- 40 Gallon water heater
- Vinyl windows with Insulated, low E (white)

Kitchen

- Appliance allowance - \$2,000
- Stainless sink with Moen single lever faucet (chrome)
- Garbage disposal
- All wood cabinets
- Level I Granite or Quartz counter tops
- Ice maker line

Bath features

- Tub with tile walls
- Tiled shower with glass enclosure
- Full length vanity mirrors
- All wood cabinets
- Moen single lever faucets (chrome)

**** pricing, features, terms of availability, and amenities are subject to change****