



TOWNSLEY

CONSTRUCTION

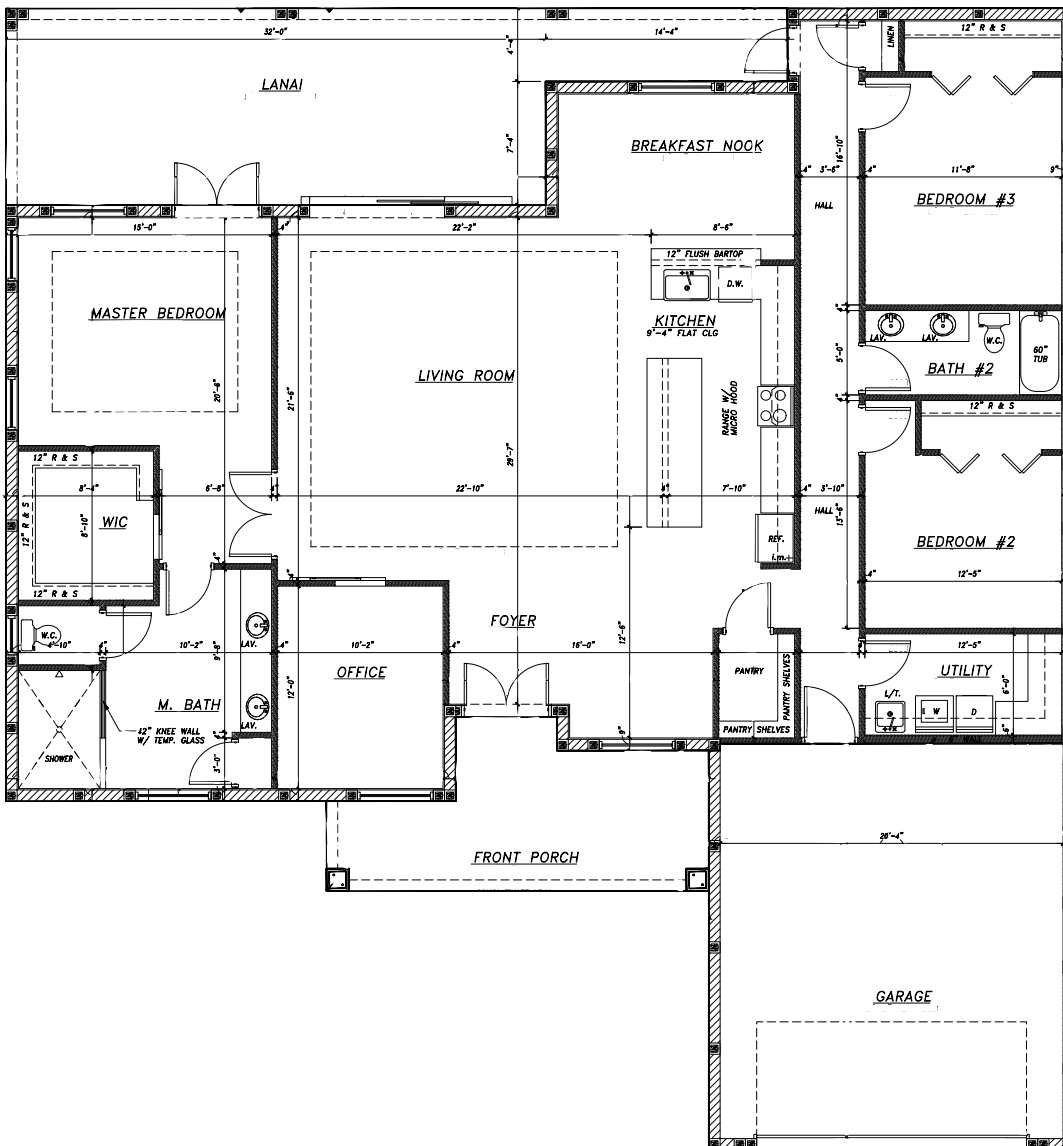


"The Bennett"

- 3 Bedrooms
- 2 Full Baths
- 2 Car Garage
- Optional Rooms

2,410 SF Living
3,545 SF Total

\$388,499
As Shown and
outlined on
Standard Quality
Features





TOWNSLEY

— CONSTRUCTION —

Standard Quality Features - The Bennett

Structural

- Concrete block construction with stucco exterior finish
- Hurricane clips & straps for strength
- 3,000 PSI w/ fiber mesh concrete monolithic slab and foundation with reinforcement.
- Engineered trusses & structural system

Interior

- 9' & 10' ceilings throughout
- 2 Coats latex paint
- Tile Everywhere except beds & closets
- Stain Resistant Carpet
- Ventilated wire shelving
- Textured ceilings & Orange Peel Walls
- Electrical fixture allowance - \$1,000

Exterior

- 2 Exterior hose bibs & 2 WP GFI outlets
- 30 year architectural shingles
- Septic and water connection included
- Site Preparation Allowance - \$7,500
- 2 Coats latex paint
- Sod & Landscape allowance - \$2,200
- Permits & Impact fees included

Energy Saving Features

- High efficiency 14 Seer HVAC w/ 10 year functional parts warranty.
- R-38 attic insulation
- 200 amp electrical service
- 40 gallon water heater
- Vinyl windows with Insulated, low E (white)

Kitchen

- Appliance allowance - \$2,000
- Stainless sink with Moen single lever faucet (chrome)
- Garbage disposal
- All wood cabinets
- Granite or Quartz Level 1 counter tops
- Ice maker line

Bath features

- Tub with tile walls
- Tiled shower with glass enclosure
- Full length vanity mirrors
- All wood cabinets
- Moen single lever faucets (chrome)

**** pricing, features, terms of availability, and amenities are subject to change****