



"The Purvis"

4 Bedroom / 3.5 Bath / 3 Car Garage / Flex Space / Bonus Room

3,523 SF Living

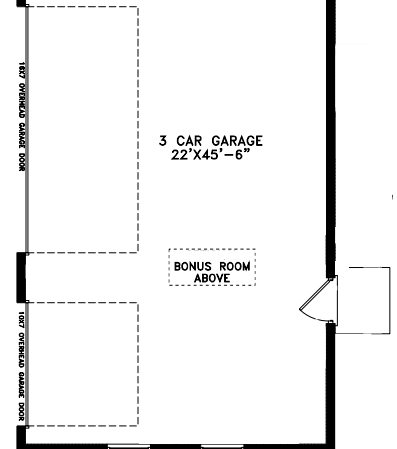
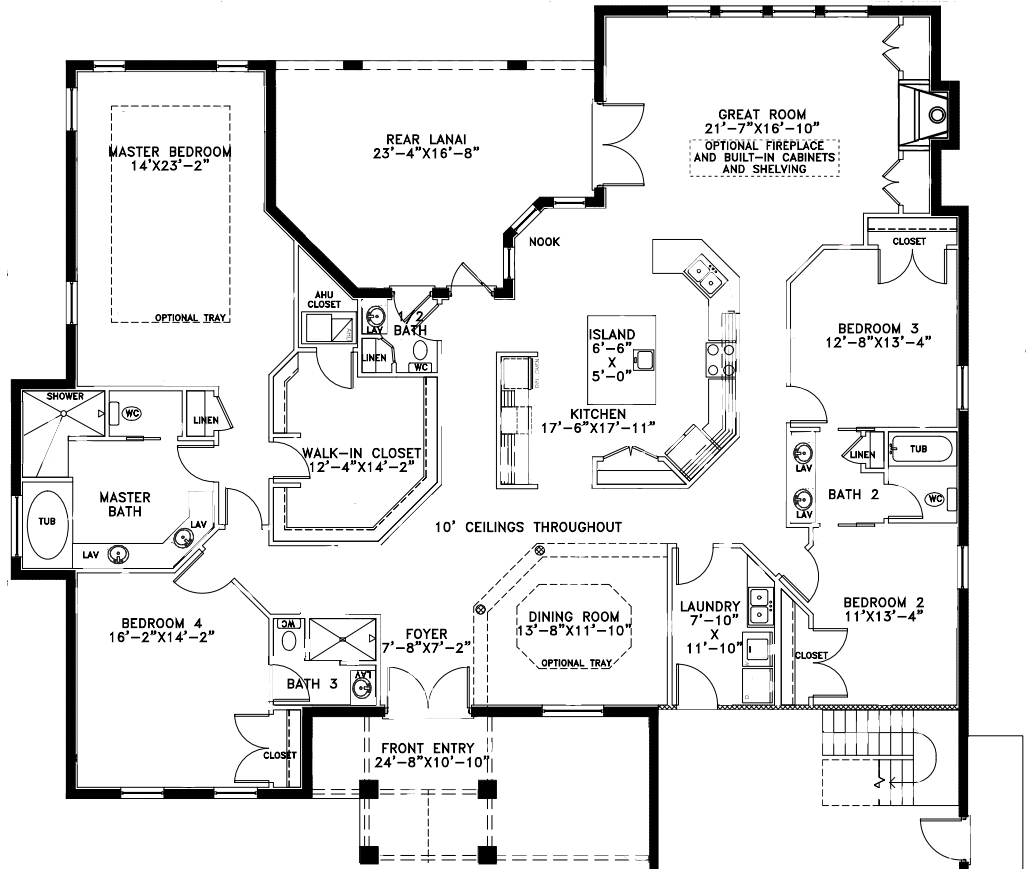
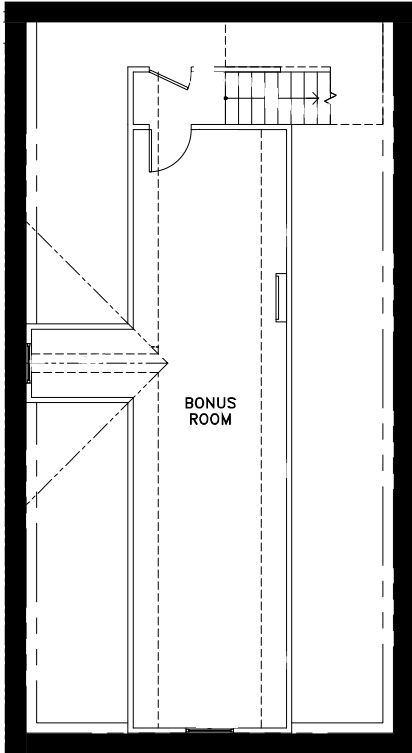
5,172 SF Total

Base Price \$561,914.00

As Outlined in Standard Quality Features on Back

TOWNSLEY

CONSTRUCTION





TOWNSLEY

CONSTRUCTION

Standard Quality Features

<https://sway.office.com/nkvPaVf5y9QB7UHU?ref=Link>



Structural

- Concrete block construction with stucco & Stone exterior finish per plan
- Hurricane clips & straps for strength
- 3,000 PSI fiber mesh concrete monolithic slab and foundation with reinforcement.
- Engineered trusses and system

Interior

- Ventilated wire shelving
- 3 Choices of Door types
- Tile in common areas stain resistant carpet in bedroom and closets
- Orange peel walls, knockdown ceilings and rounded corners in most areas

Exterior

- 2 Exterior hose bibs & 2 WP GFI outlets
- 30 year architectural shingles
- Septic and water connection included
- Site Preparation Allowance - \$7,500
- Permits & Impact fees included

Energy Saving Features

- High efficiency 15 Seer HVAC w/ 10 year functional parts warranty.
- R-38 attic insulation
- 200 amp electrical service
- 40 gallon water heater
- Vinyl windows with Insulated, low E (white)

Kitchen

- Stainless sink with Moen single lever faucet (chrome)
- Garbage disposal
- All wood cabinets
- Granite or Quartz Level 1 counter tops
- Ice maker line

Bath features

- Full length vanity mirrors
- All wood cabinets
- Moen single lever faucets (chrome)

**** pricing, features, terms of availability, and amenities are subject to change****